

# 2020

## DALY-TIWI- WEST ARNHEM

### Health Profile



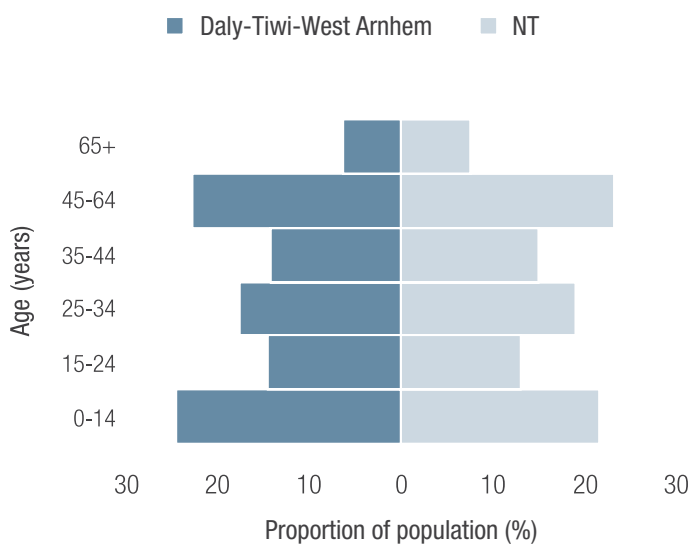
#### POPULATION



17,872

-1.3%  
decrease between  
2011-2019

#### AGE

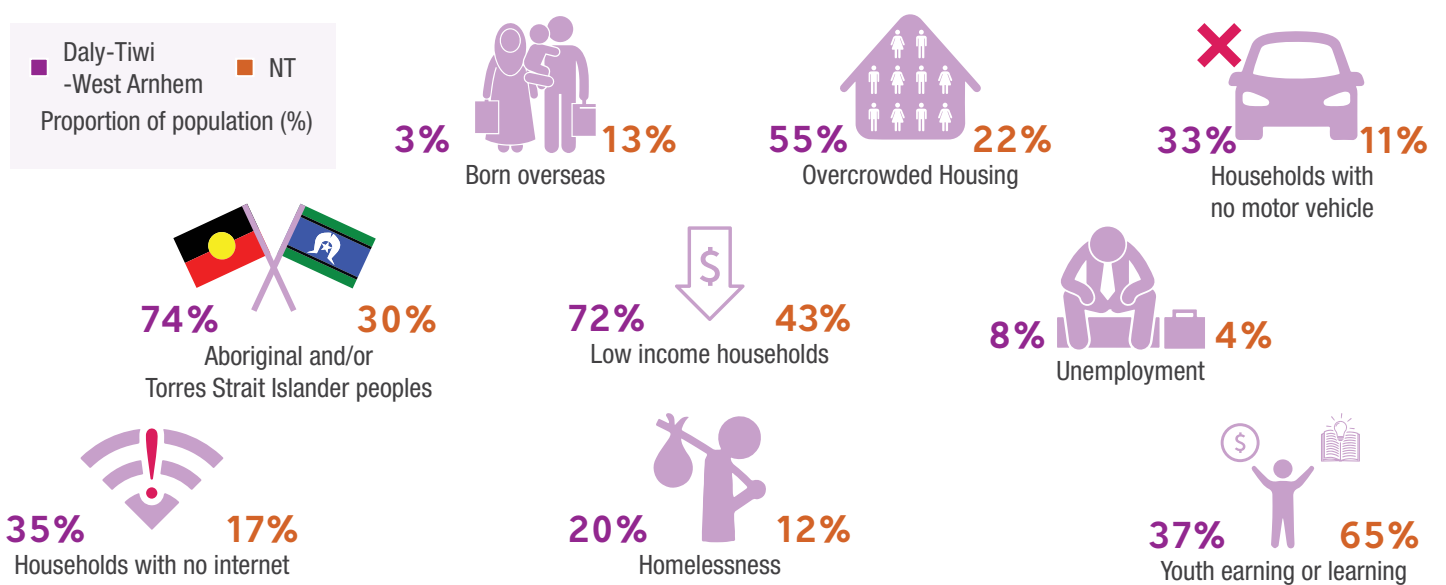


#### REMOTENESS

Daly-Tiwi-West Arnhem is classified as Remote and Very Remote Australia

|  |                      |
|--|----------------------|
| Number of births                         | 226                  |
| Infant Mortality Rate                    | 9.3 per 1,000 births |
| Median age at death (all persons)        | 60 years             |
| Median age at death (Aboriginal persons) | 53 years             |

#### SOCIODEMOGRAPHICS



### ABORIGINAL AND TORRES STRAIT ISLANDER HEALTH



Aboriginal and Torres Strait Islander peoples are a significant and respected proportion of the NT population.

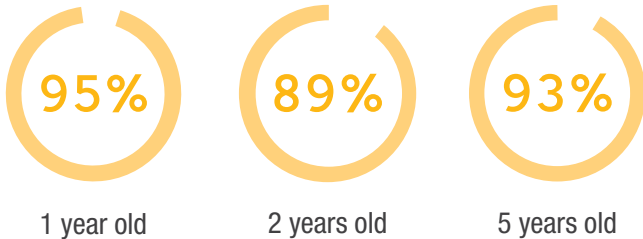
This is the oldest living culture in the world, and the connections to country, language and culture are a source of strength in modern Aboriginal communities. This population also tends to experience very high levels of disadvantage, particularly in more remote locations. This is reflected in poor health statistics, including high rates of chronic disease, infectious disease and premature mortality.

The estimated gap in life expectancy between Aboriginal and non-Aboriginal Australians in the NT is 14.4 years.



### IMMUNISATION

Proportion of children fully immunised (%)



### LEADING CAUSES OF DEATH



1

Coronary heart disease



2

Chronic Lung Disease



3

Lung cancer



4

Diabetes

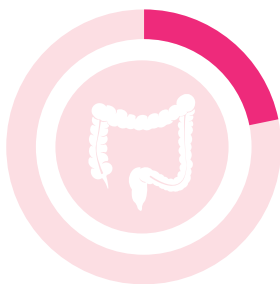


5

Land transport accidents

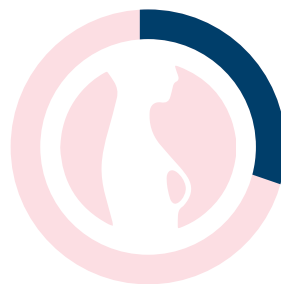
### CANCER SCREENING

Proportion of eligible population screened (%)



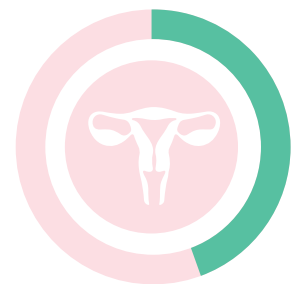
22%

National Bowel Cancer Screening Program



29%

BreastScreen Australia



44%

National Cervical Screening Program