

2020 DARWIN CITY

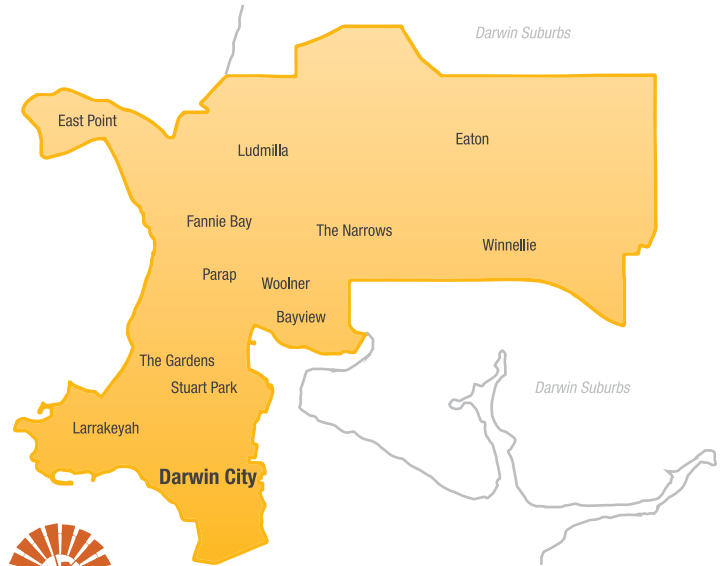
Health Profile

POPULATION

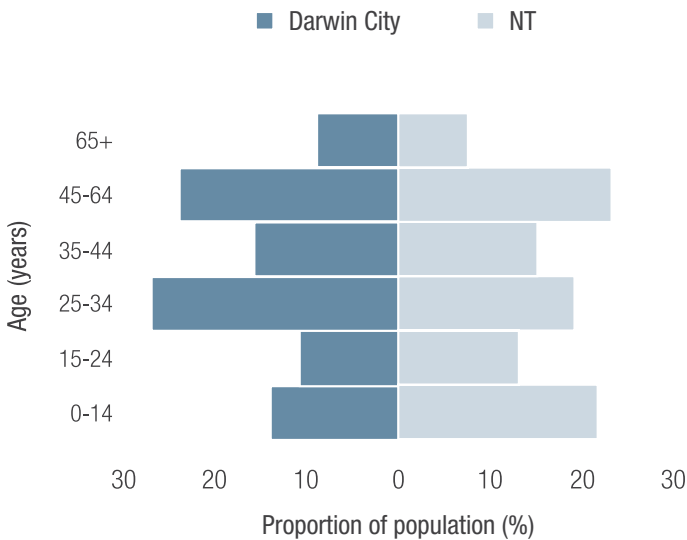


27,674

+11%
increase between
2011-2019



AGE

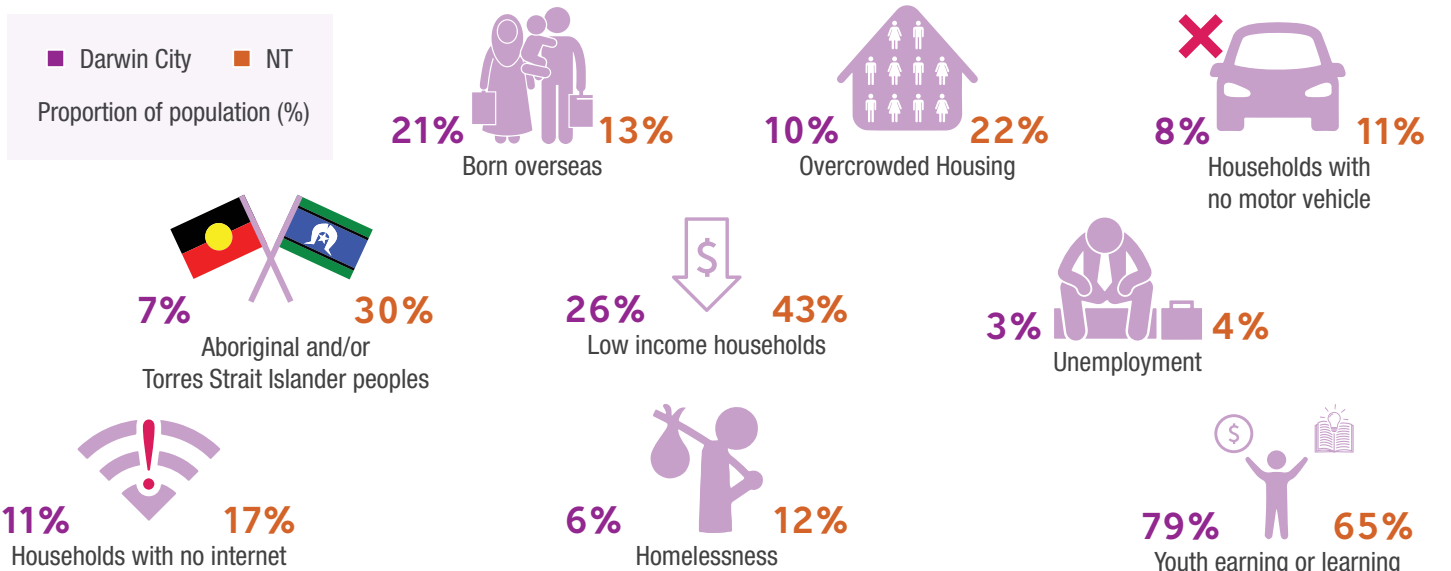


REMOTENESS

Darwin City is classified as Outer Regional Australia.

Number of births	330
Infant Mortality Rate	5.9 per 1,000 births
Median age at death (all persons)	75 years
Median age at death (Aboriginal persons)	55 years

SOCIODEMOGRAPHICS



Health Profile

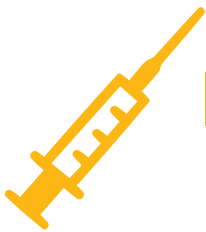
ABORIGINAL AND TORRES STRAIT ISLANDER HEALTH



Aboriginal and Torres Strait Islander peoples are a significant and respected proportion of the NT population.

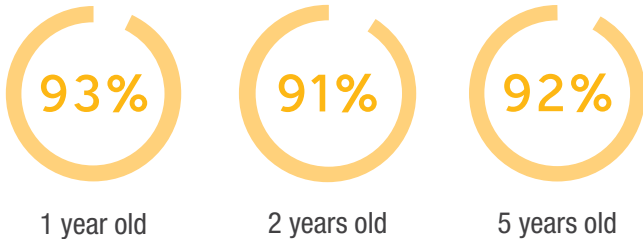
This is the oldest living culture in the world, and the connections to country, language and culture are a source of strength in modern Aboriginal communities. This population also tends to experience very high levels of disadvantage, particularly in more remote locations. This is reflected in poor health statistics, including high rates of chronic disease, infectious disease and premature mortality.

The estimated gap in life expectancy between Aboriginal and non-Aboriginal Australians in the NT is 14.4 years.

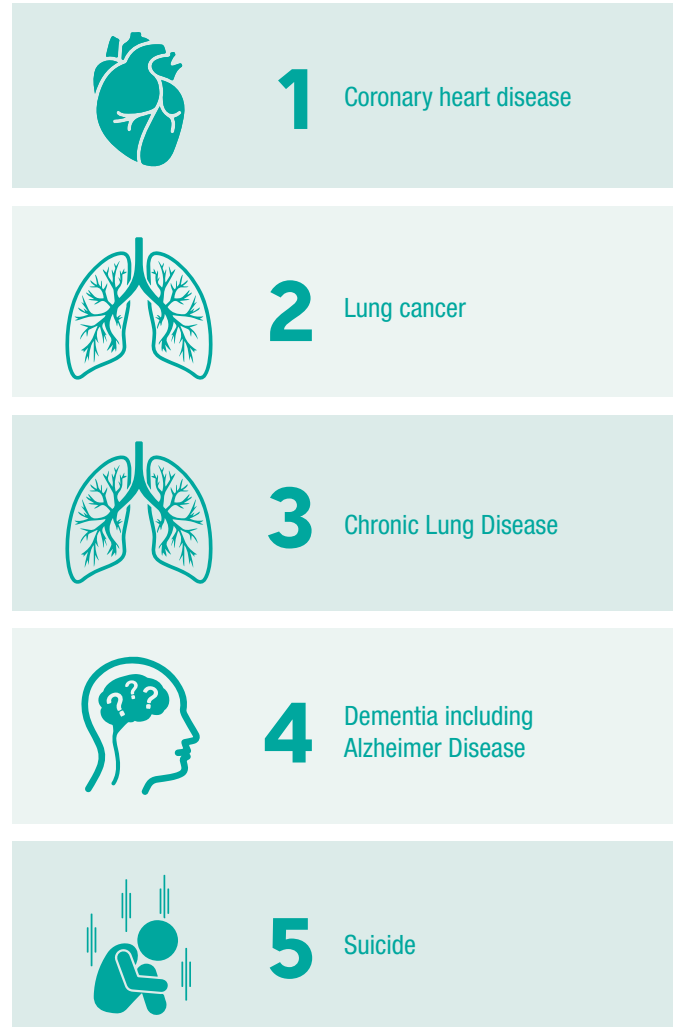


IMMUNISATION

Proportion of children fully immunised (%)



LEADING CAUSES OF DEATH



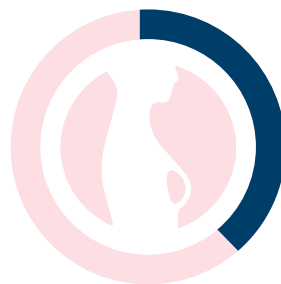
CANCER SCREENING

Proportion of eligible population screened (%)



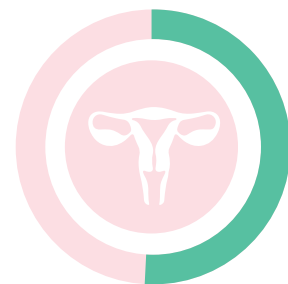
31%

National Bowel Cancer Screening Program



38%

BreastScreen Australia



51%

National Cervical Screening Program