

2020 KATHERINE

Health Profile

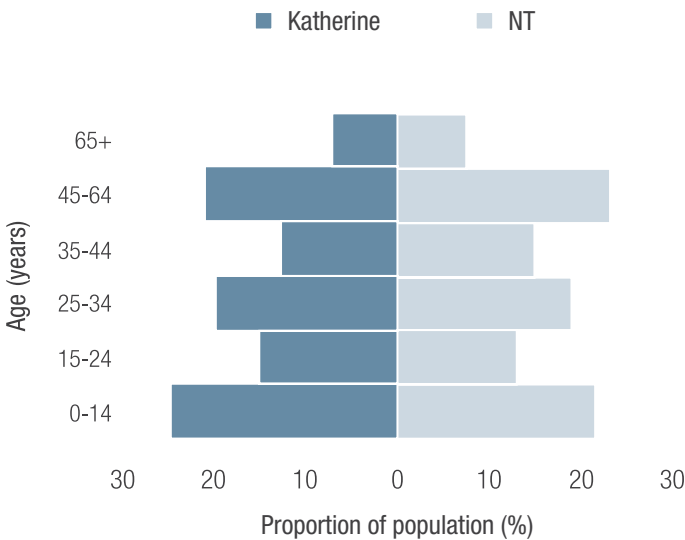


POPULATION



+2%
increase between
2011-2019

AGE

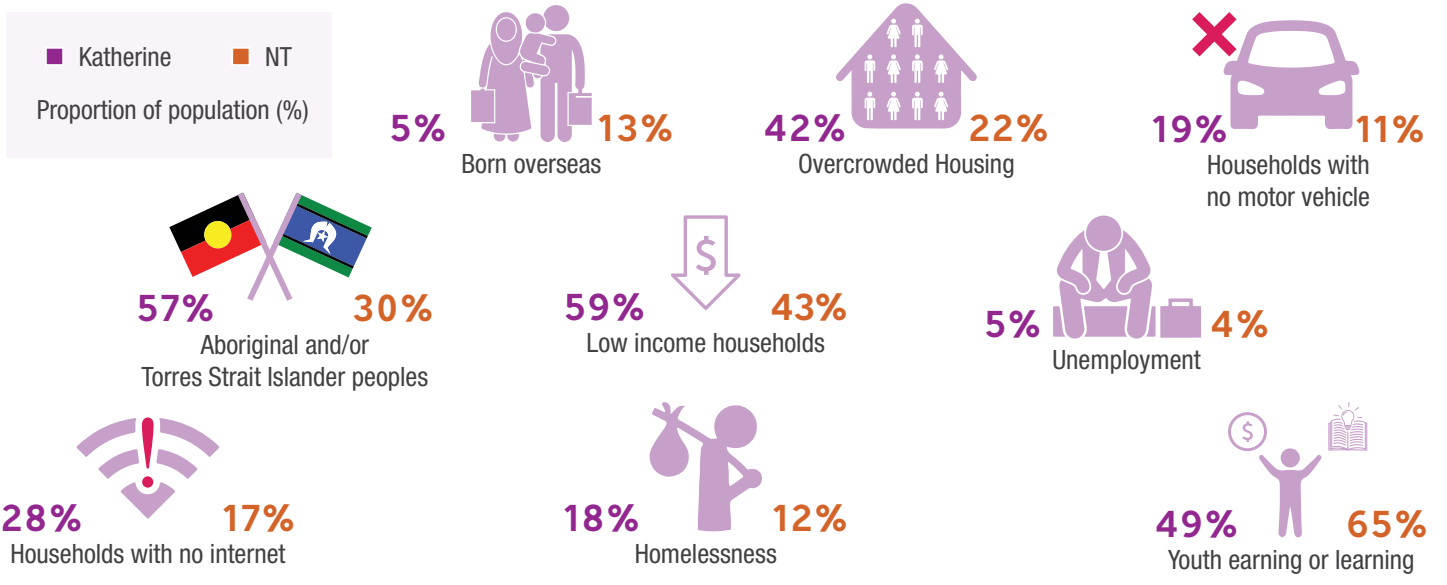


REMOTENESS

Katherine is classified as Remote and Very Remote Australia

Number of births	361
Infant Mortality Rate	10.5 per 1,000 births
Median age at death (all persons)	62 years
Median age at death (Aboriginal persons)	55.5 years

SOCIODEMOGRAPHICS



KATHERINE

Health Profile

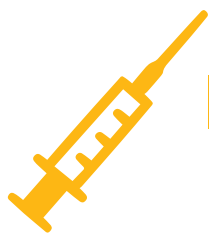
ABORIGINAL AND TORRES STRAIT ISLANDER HEALTH



Aboriginal and Torres Strait Islander peoples are a significant and respected proportion of the NT population.

This is the oldest living culture in the world, and the connections to country, language and culture are a source of strength in modern Aboriginal communities. This population also tends to experience very high levels of disadvantage, particularly in more remote locations. This is reflected in poor health statistics, including high rates of chronic disease, infectious disease and premature mortality.

The estimated gap in life expectancy between Aboriginal and non-Aboriginal Australians in the NT is 14.4 years.



IMMUNISATION

Proportion of children fully immunised (%)



1 year old



2 years old



5 years old

LEADING CAUSES OF DEATH



1

Coronary heart disease



2

Chronic Lung Disease



3

Dementia including Alzheimer Disease



4

Lung cancer

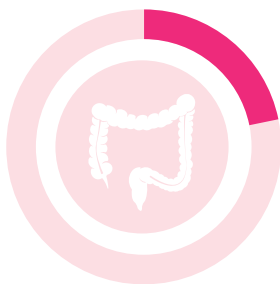


5

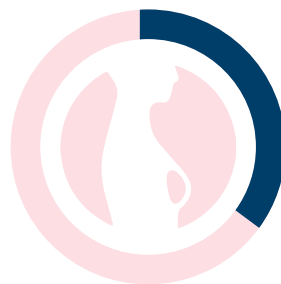
Suicide

CANCER SCREENING

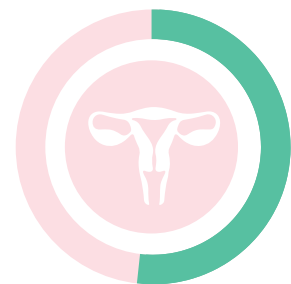
Proportion of eligible population screened (%)



National Bowel Cancer Screening Program



BreastScreen Australia



National Cervical Screening Program