

2020 PALMERSTON Health Profile

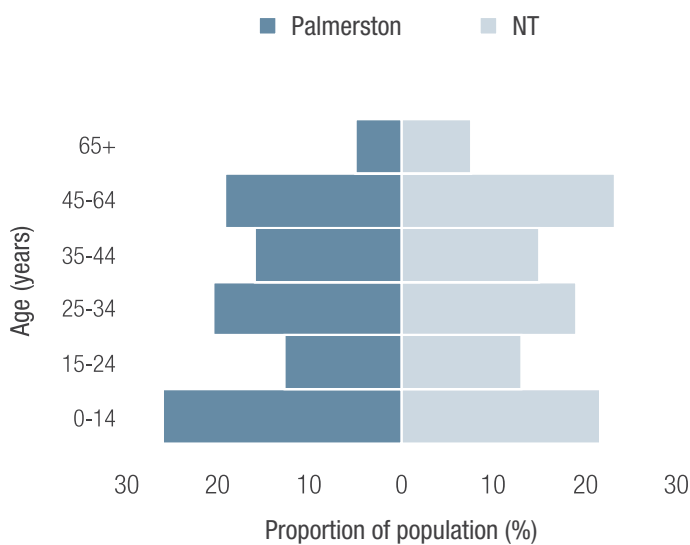
POPULATION



+30%
increase between
2011-2019



AGE

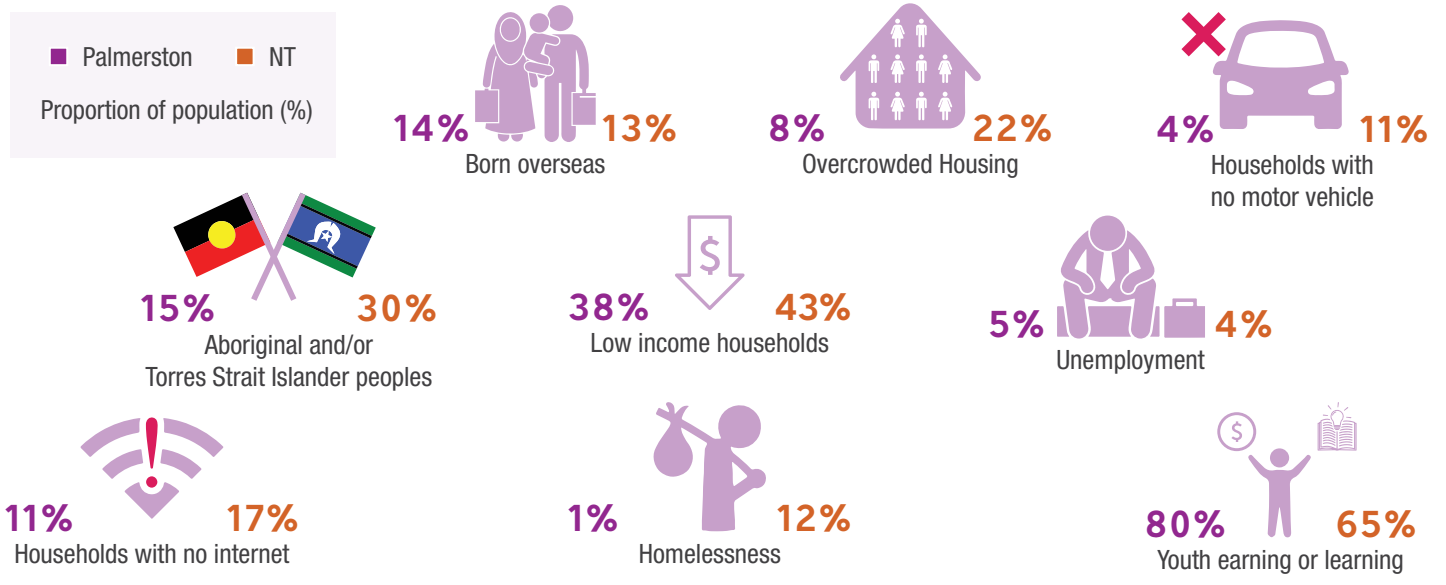


REMOTENESS

Palmerston is classified as Outer Regional Australia.

Number of births	737
Infant Mortality Rate	4.4 per 1,000 births
Median age at death (all persons)	67 years
Median age at death (Aboriginal persons)	57 years

SOCIODEMOGRAPHICS



PALMERSTON

Health Profile

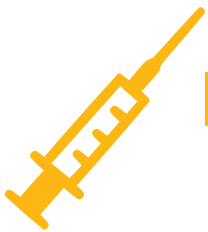
ABORIGINAL AND TORRES STRAIT ISLANDER HEALTH



Aboriginal and Torres Strait Islander peoples are a significant and respected proportion of the NT population.

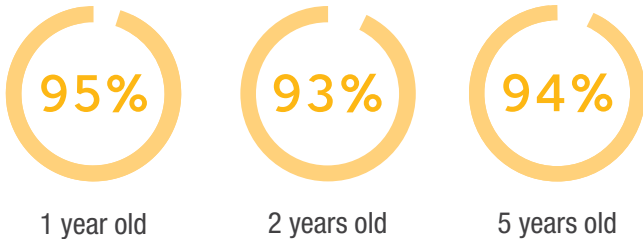
This is the oldest living culture in the world, and the connections to country, language and culture are a source of strength in modern Aboriginal communities. This population also tends to experience very high levels of disadvantage, particularly in more remote locations. This is reflected in poor health statistics, including high rates of chronic disease, infectious disease and premature mortality.

The estimated gap in life expectancy between Aboriginal and non-Aboriginal Australians in the NT is 14.4 years.



IMMUNISATION

Proportion of children fully immunised (%)



LEADING CAUSES OF DEATH



1 Coronary heart disease



2 Lung cancer



3 Chronic Lung Disease



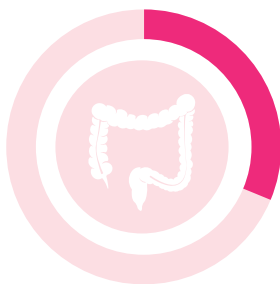
4 Dementia including Alzheimer Disease



5 Suicide

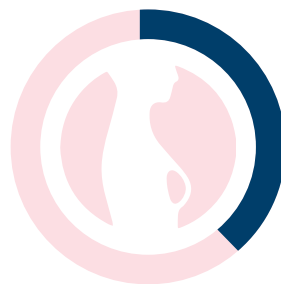
CANCER SCREENING

Proportion of eligible population screened (%)



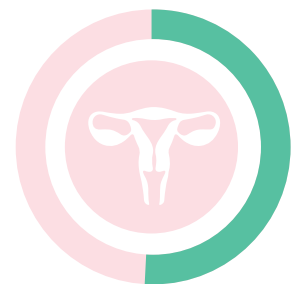
29%

National Bowel Cancer Screening Program



37%

BreastScreen Australia



51%

National Cervical Screening Program